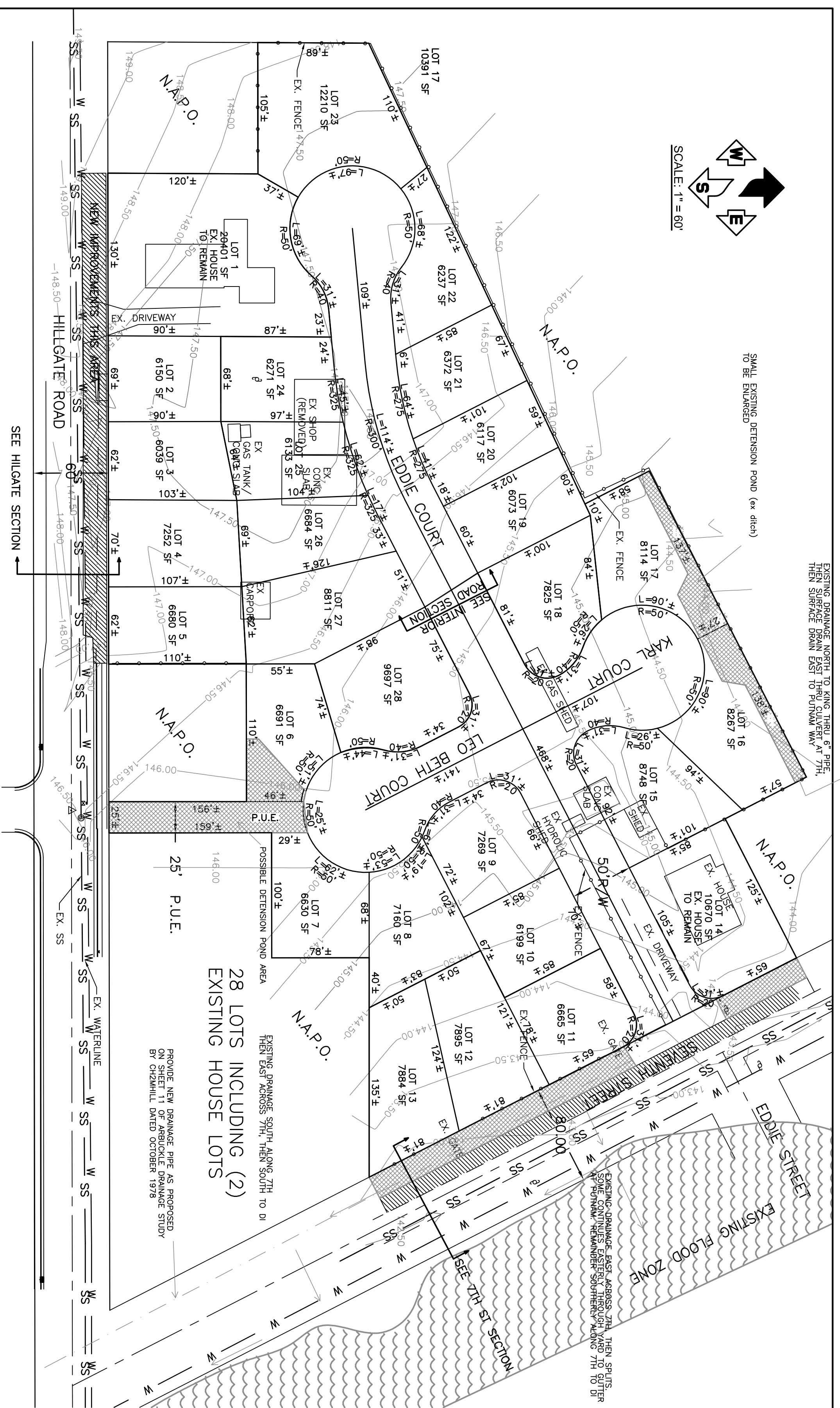


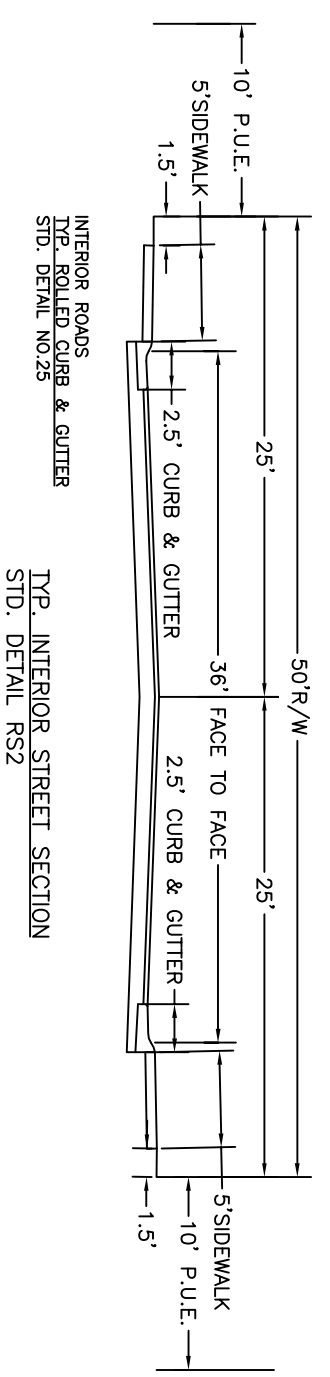
EXISTING DRAINAGE NORTH TO KING THRU 6" PIPE, THEN SURFACE DRAIN EAST THRU CULVERT AT 7TH, THEN SURFACE DRAIN EAST TO PUTNAM WAY

SMALL EXISTING DETENTION POND (ex ditch) TO BE ENLARGED

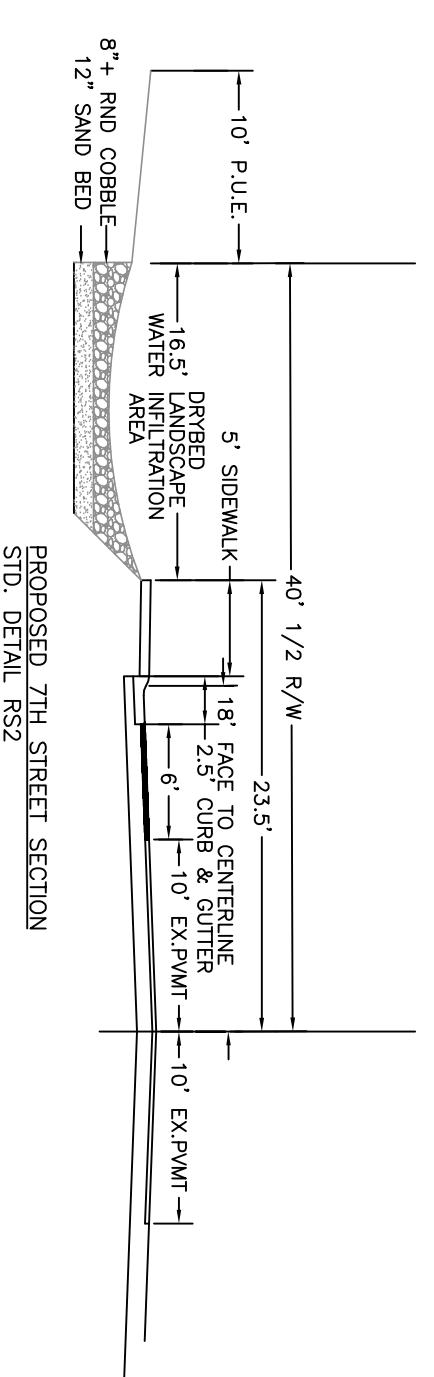


28 LOTS INCLUDING (2) EXISTING HOUSE LOTS

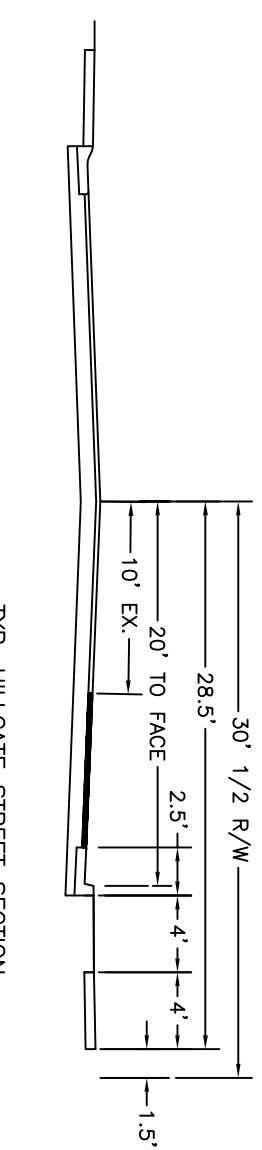
PROVIDE NEW DRAINAGE PIPE AS PROPOSED ON SHEET 11 OF ARBUCKLE DRAINAGE STUDY BY CH2MHILL DATED OCTOBER 1978



TYP. INTERIOR STREET SECTION
STD. DETAIL RS2



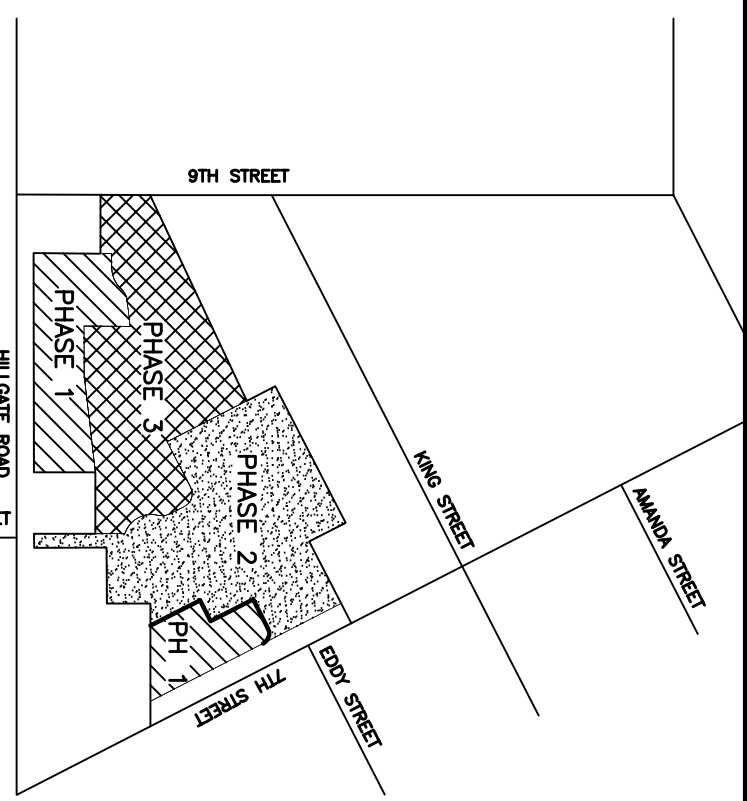
PROPOSED 7TH STREET SECTION
STD. DETAIL RS2



TYP. HILLCOURT STREET SECTION

DRAINAGE NOTE: EXISTING SOILS "C FACTORS" (IMPERVIOUSNESS) NUMBERS ARE HIGH DUE TO EXISTING GRAVEL AND OLD ASPHALT COVER. POST RUNOFF CONDITIONS SHOULD BE OF LITTLE INCREASE. APPLICANT PROPOSES TO MATCH RUNOFF OF EXISTING CONDITIONS BY DIRECTING DRAINAGE TO ONE OF SEVERAL DETENTION BASINS PROPOSED AND RELEASING RUNOFF AT PRE CONSTRUCTION RATES AS TO NOT INUNDATE EXISTING STORM SYSTEMS

POSSIBLE PROPOSED DETENTION BASINS



VICINITY MAP
N.T.S.

OWNER/APPLICANT
CHARLES C. & DORIS GEYER
P.O. BOX 1111
ARBUCKLE, CA. 95912
(530)476-2253

ENGINEER
KEY & ASSOCIATES
1646 POOLE BLVD.
YUBA CITY, CA 95993
(530)674-1565

TOTAL ACREAGE
6.59 ACRE

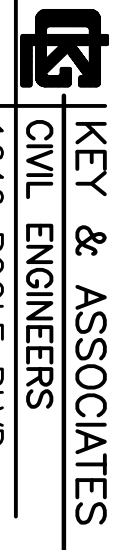
ADDRESS:
7th Street @ Eddy Street
ARBUCKLE, CA. 95912

GENERAL NOTES

ZONING	R1-8
PROPOSED ZONING	R1-6
CURRENT ZONING	COMMERCIAL/MATERIAL STORAGE
PROPOSED USE	RESIDENTIAL
WATER	AP.U.D.
SEWER	NOR-CAL WASTE
DRAINAGE	COLUSA COUNTY PUBLIC WORKS
ELECTRICITY	P.G. & E.
GAS	P.G. & E.
TELEPHONE	FRONTIER COMMUNICATIONS
CABLE	COMCAST

3 PHASES
PHASE 1 LOTS 1-5,11-13
PHASE 2 LOTS 6-10,14-17
PHASE 3 LOTS 18-28

TENTATIVE SUBDIVISION MAP
FOR
CHARLES GEYER



KEY & ASSOCIATES
CIVIL ENGINEERS
1646 POOLE BLVD.
YUBA CITY, CA
TEL: 530-674-1565