

RESOLUTION NO. 11-001

**A RESOLUTION PLACING SPECIAL TAX ON THE
April 12, 2011 SPECIAL ELECTION BALLOT**

WHEREAS, the Board of Supervisors of the County of Colusa has enacted Colusa County Ordinance No. 741 (a copy of which is attached hereto) to levy a special tax pursuant to Government Code sections 50077 and 53724 as well as Article 13C, section 2(d); and

WHEREAS, an ordinance to levy a special tax shall not become effective unless approved by a two-thirds (2/3) vote of members of the Board of Supervisors and approval of the special tax by a two-third (2/3) vote of the qualified voters of the Walnut Ranch unincorporated area as set forth in Attachment 2 to this resolution voting in an election on the issue.

NOW, THEREFORE, the Board of Supervisors of the County of Colusa does hereby resolve as follows:

1. That the Clerk of the Board of Supervisors be and the same is hereby directed to transmit a copy of this Resolution to the County Elections Officer for placement of the special tax measure on the April 12, 2011, special election ballot. The special election called by this resolution shall be conducted by mail ballot only.
2. That the ballot proposition for the measure shall read as follows:

WALNUT RANCH UNINCORPORATED AREA SPECIAL TAX

Shall the County of Colusa be authorized to levy a special tax in the amount of \$687.57 per parcel in the Walnut Ranch Unincorporated Area as set forth in Attachment 2 to the Board of Supervisors' Resolution No. 11-001 for a period of two years to repay the County of Colusa for County funds to be advanced by the County of Colusa to Walnut Ranch Unincorporated Area residents to assist in the potential annexation of said area to the City of Colusa upon the passage of this tax measure?

On a motion by Supervisor Carter, seconded by Supervisor Indrieri, the foregoing Resolution was passed and adopted by the Board

of Supervisors of the County of Colusa, State of California, this 11th day of January 2011 by the following vote:

AYES: Supervisors Denise J. Carter, Thomas A. Indrieri, Mark D. Marshall, Gary J. Evans, and Kim Dolbow Vann.

NOES: None.

ABSENT: None.



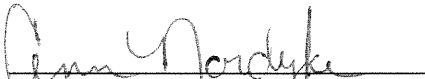
Kim Dolbow Vann, Chairman
Colusa County Board of Supervisors

ATTEST:
Kathleen Moran
Colusa County Clerk/Recorder
And Ex-Officio Board Clerk

APPROVED AS TO FORM:




Thomas R. Parker,
County Counsel

By: 
Ann Nordyke, Deputy

I certify this copy to be a true
and correct copy of the
original record on file in this
office.

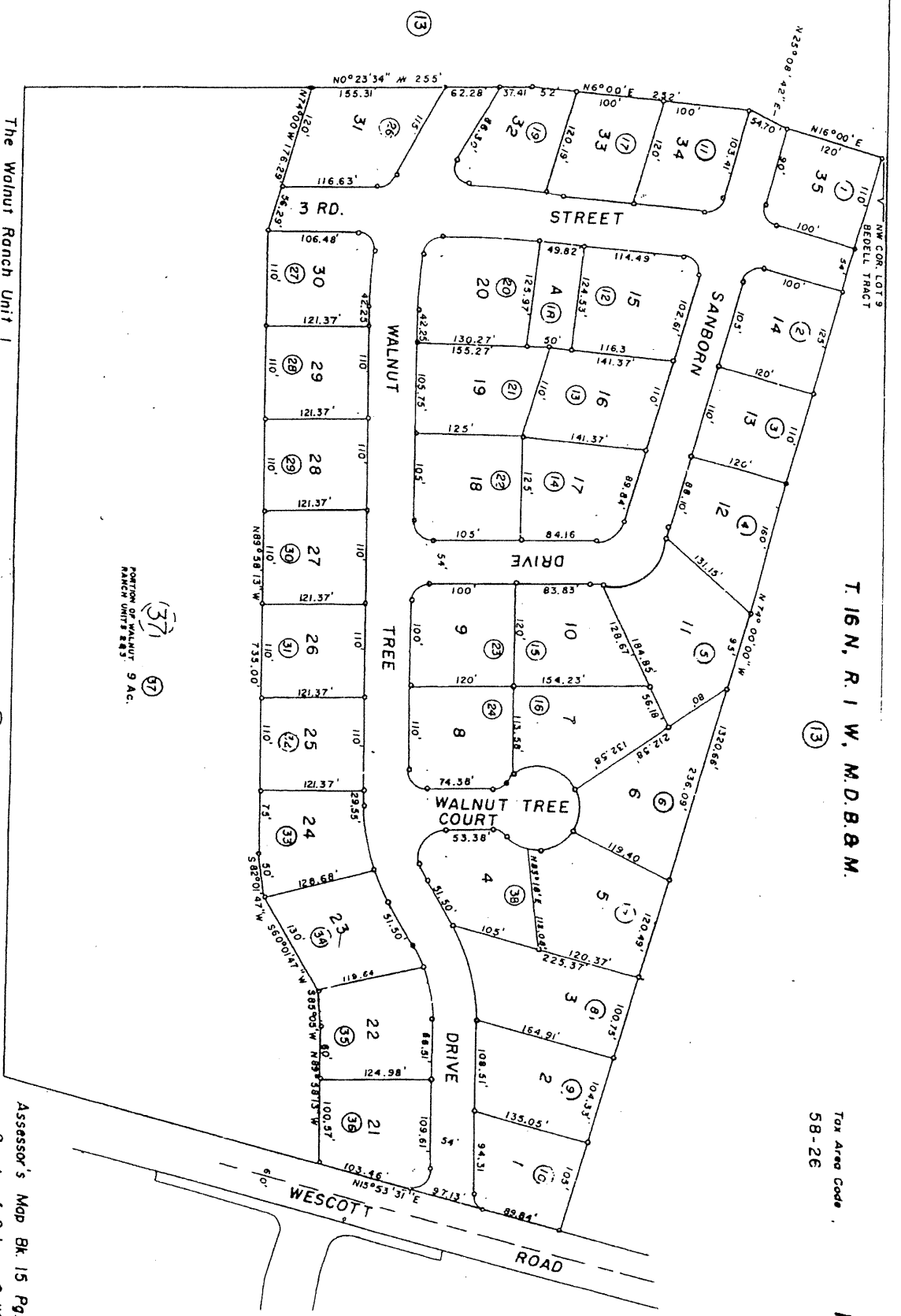
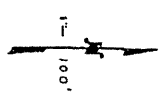
Attest: Kathleen Moran
County Clerk and Recorder
and ex-officio Clerk of the
Board of Supervisors, in and
for the County of Colusa,
State of California

BY: 
Deputy

T. 16 N., R. 1 W., M.D.B. & M.

Tax Area Code
58-26

15-32



(37) (37)
PORTION OF WALNUT
RANCH UNITS 283 9 AC.

The Walnut Ranch Unit 1
Being a Portion of Lot 9 of The Bedell Tract, Tin Tube
Subdn Book 1 Page 7

NOTE - Assessor's Block Numbers Shown in Ellipses
Assessor's Parcel Numbers Shown in Circles

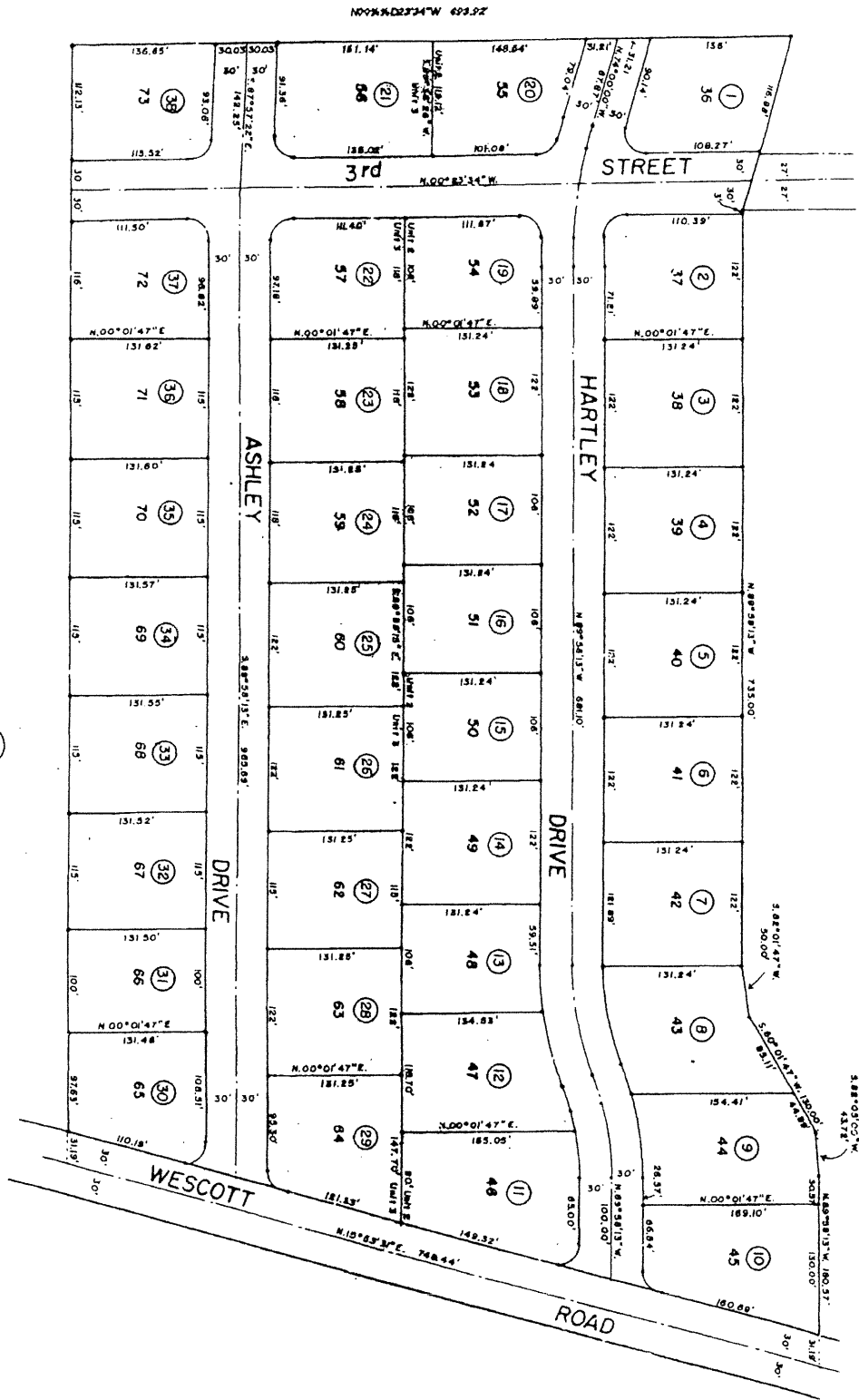
Assessor's Map Bk. 15 Pg. 32
County of Colusa, Calif.
1971

T.16 N., R.1 W., M.D.B. & M.

(32)

Tax Area Code
58-000

15-37



(13)

(23)

The Walnut Ranch Units 2 & 3, Subd'n Bk.1 Pg.17
Being a Portion of Lots 9 & 10 of The Bedell Tract

BLK. Pg. 3

NOTE - Assessor's Block Numbers Shown in Ellipses

Assessor's Map Bk. 15 Pg. 37
County of Colusa, Calif.
1980